

# Tuba Fingering Chart

Notes on gray background are pedal tones.

	A $\sharp$ B $\flat$	B	C	C $\sharp$ D $\flat$	D	D $\sharp$ E $\flat$	E	F
BB $\flat$ Tuba	Open	1 2 3 4 or 2 3 (lip down)	1 2 3 4	1 3 4	2 3 4	1 2 4	2 4 or 1 2 3	4 or 1 3
C Tuba	1	2	Open	1 2 3 4 or 2 3 (lip down)	1 2 3 4	1 3 4	2 3 4	1 2 4

	F $\sharp$ G $\flat$	G	G $\sharp$ A $\flat$	A	A $\sharp$ B $\flat$	B	C	C $\sharp$ D $\flat$
BB $\flat$ Tuba	2 3	1 2	1	2	Open	2 4 or 1 2 3	4 or 1 3	2 3
C Tuba	2 4	4	2 3	1 2	1	2	Open	2 4

	D	D $\sharp$ E $\flat$	E	F	F $\sharp$ G $\flat$	G	G $\sharp$ A $\flat$	A
BB $\flat$ Tuba	1 2	1	2	Open	2 3	1 2	1	2
C Tuba	4	2 3	1 2	1	2	Open	2 3	1 2

	A $\sharp$ B $\flat$	B	C	C $\sharp$ D $\flat$	D	D $\sharp$ E $\flat$	E	F
BB $\flat$ Tuba	Open	1 2	1	2	Open	1	2	Open
C Tuba	1	2	Open	1 2	1	2	Open	1

	F $\sharp$ G $\flat$	G	G $\sharp$ A $\flat$	A	A $\sharp$ B $\flat$	B	C	C $\sharp$ D $\flat$
BB $\flat$ Tuba	2 3	1 2	1	2	Open	1 2	1	2
C Tuba	2	Open	2 3	1 2	1	2	Open	1 2

	D	D $\sharp$ E $\flat$	E	F	F $\sharp$ G $\flat$	G	G $\sharp$ A $\flat$	A	A $\sharp$ B $\flat$
BB $\flat$ Tuba	Open	1	2	Open	2 3	1 2	1	2	Open
C Tuba	1	2	Open	1	2	Open	2 3	1 2	1

(When more than one fingering is shown, the first is the most common.)

# Long Tones

## Concert F Descending

1

Two staves of music in bass clef, common time. The first staff contains measures 1 through 7, and the second staff contains measures 8 through 14. The notes are: 1 (F), 2 (E), 3 (D), 4 (C), 5 (B), 6 (A), 7 (G), 8 (F), 9 (E), 10 (D), 11 (C), 12 (B), 13 (A), 14 (G).

2

One staff of music in bass clef, common time. The notes are: 1 (F), 2 (E), 3 (D), 4 (C), 5 (B), 6 (A).

## Long Tone 1

1a

Two staves of music in bass clef, common time. The first staff contains measures 1 through 7, and the second staff contains measures 8 through 14. The notes are: 1 (F), 2 (E), 3 (D), 4 (C), 5 (B), 6 (A), 7 (G), 8 (F), 9 (E), 10 (D), 11 (C), 12 (B), 13 (A), 14 (G).

1b

Two staves of music in bass clef, common time. The first staff contains measures 1 through 7, and the second staff contains measures 8 through 14. The notes are: 1 (F), 2 (E), 3 (D), 4 (C), 5 (B), 6 (A), 7 (G), 8 (F), 9 (E), 10 (D), 11 (C), 12 (B), 13 (A), 14 (G).

1c

Two staves of music in bass clef, common time. The first staff contains measures 1 through 5, and the second staff contains measures 6 through 10. The notes are: 1 (F), 2 (E), 3 (D), 4 (C), 5 (B), 6 (A), 7 (G), 8 (F), 9 (E), 10 (D).

1d

Two staves of music in bass clef, common time. The first staff contains measures 1 through 6, and the second staff contains measures 7 through 12. The notes are: 1 (F), 2 (E), 3 (D), 4 (C), 5 (B), 6 (A), 7 (G), 8 (F), 9 (E), 10 (D), 11 (C), 12 (B).

# Articulation Exercise

Tuba

Notes that Touch

Long-Lifted Notes  
Played as long as they can w/o touching



7

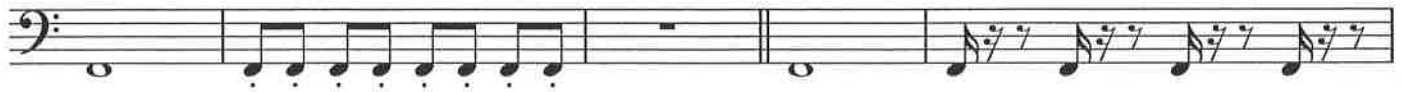
Lifted Notes  
Play as full length eighth note with an eighth rest

Notes that Touch



13

Lifted Notes



18



20



# Daily Drill / Individual Warm-Up

- 1.) Playing these drills everyday will transform you into a brass playing ROCK STAR
- 2.) These drills should be played before you play ANYTHING else!
- 3.) After you complete your Daily Drill, you should then practice your Scales, and then your Sheet Music.

## Section 1 - Lip Slurs

**Level 1** - Play Smoothly and at a Moderate to Slow Tempo. Change Notes using Only Your Air Speed and Embouchure!

Musical notation for Level 1 Lip Slurs. The first staff shows measures 1 through 7 with slurs and fingerings: (0), (2), (1), (12). The second staff shows measures 8 through 14 with slurs and fingerings: (23), (4) (13), (24) (123).

**Level 2** - Keep Everything Still and Your Air Steady & Smooth!

Musical notation for Level 2 Lip Slurs. The first staff shows measures 1 through 8 with slurs and fingerings: (0), (2), (1), (12). The second staff shows measures 9 through 14 with slurs and fingerings: (23), (4) (13), (24) (123).

**Level 3** - Keep Your Air Moving Fast, Steady, and Smooth!

Musical notation for Level 3 Lip Slurs. The first staff shows measures 1 through 6 with slurs and fingerings: (0), (2), (1). The second staff shows measures 7 through 14 with slurs and fingerings: (12), (23), (4) (13), (24) (123).

**Level 4** - FAST AIR!!! Be Sure to Take in a Huge Breath at every Breath Mark! Don't Articulate!!!

Musical notation for Level 4 Lip Slurs. The first staff shows measures 1 through 6 with slurs and fingerings: (0), (2), (1). The second staff shows measures 7 through 12 with slurs and fingerings: (12), (23), (4) (13).

TMEA Region IX Required Scales

# Tuba

F Major

Musical notation for the F Major scale on a tuba staff. The scale is written in bass clef with one flat (Bb). It consists of two lines of music: the first line contains the first eight notes (F, G, Ab, Bb, C, D, E, F), and the second line contains the last four notes (G, Ab, Bb, C) followed by a whole rest. A slur is placed under the first eight notes.

Bb Major

Musical notation for the Bb Major scale on a tuba staff. The scale is written in bass clef with two flats (Bb, Eb). It consists of two lines of music: the first line contains the first eight notes (Bb, C, D, Eb, F, G, Ab, Bb), and the second line contains the last four notes (C, D, Eb, F) followed by a whole rest. A slur is placed under the first eight notes.

Eb Major

Musical notation for the Eb Major scale on a tuba staff. The scale is written in bass clef with three flats (Bb, Eb, Ab). It consists of two lines of music: the first line contains the first eight notes (Eb, F, G, Ab, Bb, C, D, Eb), and the second line contains the last four notes (F, G, Ab, Bb) followed by a whole rest. A slur is placed under the first eight notes.

Ab Major

Musical notation for the Ab Major scale on a tuba staff. The scale is written in bass clef with four flats (Bb, Eb, Ab, Db). It consists of two lines of music: the first line contains the first eight notes (Ab, Bb, C, Db, Eb, F, G, Ab), and the second line contains the last four notes (Bb, C, Db, Eb) followed by a whole rest. A slur is placed under the first eight notes.

Db Major

Musical notation for the Db Major scale on a tuba staff. The scale is written in bass clef with five flats (Bb, Eb, Ab, Db, Gb). It consists of two lines of music: the first line contains the first eight notes (Db, Eb, F, Gb, Ab, Bb, C, Db), and the second line contains the last four notes (Eb, F, Gb, Ab) followed by a whole rest. A slur is placed under the first eight notes.

Gb Major

Musical notation for the Gb Major scale on a tuba staff. The scale is written in bass clef with six flats (Bb, Eb, Ab, Db, Gb, Cb). It consists of two lines of music: the first line contains the first eight notes (Gb, Ab, Bb, Cb, Db, Eb, F, Gb), and the second line contains the last four notes (Ab, Bb, Cb, Db) followed by a whole rest. A slur is placed under the first eight notes.

B Major

Musical notation for the B Major scale on a tuba staff. The scale is written in bass clef with two sharps (F#, C#). It consists of two lines of music: the first line contains the first eight notes (B, C, D, E, F#, G, A, B), and the second line contains the last four notes (C, D, E, F) followed by a whole rest. A slur is placed under the first eight notes.

E Major

Musical notation for the E Major scale on a tuba staff. The scale is written in bass clef with three sharps (F#, C#, G#). It consists of two lines of music: the first line contains the first eight notes (E, F#, G, A, B, C, D, E), and the second line contains the last four notes (F#, G, A, B) followed by a whole rest. A slur is placed under the first eight notes.

A Major

Musical notation for the A Major scale on a tuba staff. The scale is written in bass clef with three sharps (F#, C#, G#). It consists of two lines of music: the first line contains the first eight notes (A, B, C, D, E, F#, G, A), and the second line contains the last four notes (B, C, D, E) followed by a whole rest. A slur is placed under the first eight notes.

D Major

Musical notation for the D Major scale on a tuba staff. The scale is written in bass clef with two sharps (F#, C#). It consists of two lines of music: the first line contains the first eight notes (D, E, F#, G, A, B, C, D), and the second line contains the last four notes (E, F#, G, A) followed by a whole rest. A slur is placed under the first eight notes.

G Major

Musical notation for the G Major scale on a tuba staff. The scale is written in bass clef with one sharp (F#). It consists of two lines of music: the first line contains the first eight notes (G, A, B, C, D, E, F#, G), and the second line contains the last four notes (A, B, C, D) followed by a whole rest. A slur is placed under the first eight notes.

C Major

Musical notation for the C Major scale on a tuba staff. The scale is written in bass clef with no sharps or flats. It consists of two lines of music: the first line contains the first eight notes (C, D, E, F, G, A, B, C), and the second line contains the last four notes (D, E, F, G) followed by a whole rest. A slur is placed under the first eight notes.

Chromatic  
Scale

The image shows two staves of musical notation for a chromatic scale exercise. The first staff is in bass clef with a common time signature (C). It begins with a slur over the first six notes, which are grouped into three pairs of triplets. The notes are: G2, G#2, A2, A#2, B2, B#2. The second staff continues the scale with a slur over the next six notes, also in three pairs of triplets: C3, C#3, D3, D#3, E3, E#3. The final note of the second staff is F3, which is also part of a triplet. The piece concludes with a double bar line.

# Chromatic Exercises

## Level 1 Chromatic

Musical notation for Level 1 Chromatic exercise, measures 8-14. The exercise is in bass clef and 4/4 time. It consists of two lines of music. The first line starts at measure 8 and ends at measure 14. The second line starts at measure 15 and ends at measure 21. The notes are: 8: Bb2, Bb2, Bb2, Bb2; 9: Ab2, Ab2, Ab2, Ab2; 10: G2, G2, G2, G2; 11: F2, F2, F2, F2; 12: Eb2, Eb2, Eb2, Eb2; 13: D2, D2, D2, D2; 14: C2, C2, C2, C2; 15: Bb1, Bb1, Bb1, Bb1; 16: Bb1, Bb1, Bb1, Bb1; 17: Ab1, Ab1, Ab1, Ab1; 18: Ab1, Ab1, Ab1, Ab1; 19: G1, G1, G1, G1; 20: G1, G1, G1, G1; 21: F1, F1, F1, F1.

## 15 Level 2 Chromatic

Musical notation for Level 2 Chromatic exercise, measures 15-22. The exercise is in bass clef and 4/4 time. It consists of a single line of music from measure 15 to 22. The notes are: 15: Bb2, Bb2, Bb2, Bb2; 16: Ab2, Ab2, Ab2, Ab2; 17: G2, G2, G2, G2; 18: F2, F2, F2, F2; 19: Eb2, Eb2, Eb2, Eb2; 20: D2, D2, D2, D2; 21: C2, C2, C2, C2; 22: Bb1, Bb1, Bb1, Bb1.

## 23 Level 3 Chromatic

Musical notation for Level 3 Chromatic exercise, measures 23-29. The exercise is in bass clef and 4/4 time. It consists of two lines of music. The first line starts at measure 23 and ends at measure 29. The second line starts at measure 30 and ends at measure 36. The notes are: 23: Bb2, Bb2, Bb2, Bb2; 24: Ab2, Ab2, Ab2, Ab2; 25: G2, G2, G2, G2; 26: F2, F2, F2, F2; 27: Eb2, Eb2, Eb2, Eb2; 28: D2, D2, D2, D2; 29: C2, C2, C2, C2; 30: Bb1, Bb1, Bb1, Bb1; 31: Bb1, Bb1, Bb1, Bb1; 32: Ab1, Ab1, Ab1, Ab1; 33: Ab1, Ab1, Ab1, Ab1; 34: G1, G1, G1, G1; 35: G1, G1, G1, G1; 36: F1, F1, F1, F1.

## 31 Level 4 Chromatic

Musical notation for Level 4 Chromatic exercise, measures 31-36. The exercise is in bass clef and 4/4 time. It consists of a single line of music from measure 31 to 36. The notes are: 31: Bb2, Bb2, Bb2, Bb2; 32: Ab2, Ab2, Ab2, Ab2; 33: G2, G2, G2, G2; 34: F2, F2, F2, F2; 35: Eb2, Eb2, Eb2, Eb2; 36: D2, D2, D2, D2.

## 35 Level 5 Chromatic

Musical notation for Level 5 Chromatic exercise, measures 35-41. The exercise is in bass clef and 4/4 time. It consists of two lines of music. The first line starts at measure 35 and ends at measure 41. The second line starts at measure 42 and ends at measure 48. The notes are: 35: Bb2, Bb2, Bb2, Bb2; 36: Ab2, Ab2, Ab2, Ab2; 37: G2, G2, G2, G2; 38: F2, F2, F2, F2; 39: Eb2, Eb2, Eb2, Eb2; 40: D2, D2, D2, D2; 41: C2, C2, C2, C2; 42: Bb1, Bb1, Bb1, Bb1; 43: Bb1, Bb1, Bb1, Bb1; 44: Ab1, Ab1, Ab1, Ab1; 45: Ab1, Ab1, Ab1, Ab1; 46: G1, G1, G1, G1; 47: G1, G1, G1, G1; 48: F1, F1, F1, F1.

## 39 Level 6 Chromatic

Musical notation for Level 6 Chromatic exercise, measures 39-45. The exercise is in bass clef and 4/4 time. It consists of a single line of music from measure 39 to 45. The notes are: 39: Bb2, Bb2, Bb2, Bb2; 40: Ab2, Ab2, Ab2, Ab2; 41: G2, G2, G2, G2; 42: F2, F2, F2, F2; 43: Eb2, Eb2, Eb2, Eb2; 44: D2, D2, D2, D2; 45: C2, C2, C2, C2.





# TUBA

Jump! ♩=136

2 3 4

Musical notation for 'Jump!' in bass clef, 4/4 time, featuring eighth and quarter notes with fingerings 2, 3, and 4.

Smoke on the Water ♩=112

2 3 4

Musical notation for 'Smoke on the Water' in bass clef, 4/4 time, featuring eighth and quarter notes with fingerings 2, 3, and 4.

I Like to Move It ♩=116

2 3 4 5

Musical notation for 'I Like to Move It' in bass clef, 4/4 time, featuring eighth and quarter notes with fingerings 2, 3, 4, and 5.

7 Nation Army ♩=116

*f* 3 2 3 3 4 3

Musical notation for '7 Nation Army' in bass clef, 4/4 time, featuring eighth and quarter notes with fingerings 3, 2, 3, 3, 4, and 3. A dynamic marking *f* is present.

The Streets of Cairo (Snake Charmer) ♩=100

2 3 4 5

Musical notation for 'The Streets of Cairo' in bass clef, 4/4 time, featuring eighth and quarter notes with fingerings 2, 3, 4, and 5.

NFL on Fox ♩=100

2 3 4 5 6 7 8

Musical notation for 'NFL on Fox' in bass clef, 4/4 time, featuring eighth and quarter notes with fingerings 2, 3, 4, 5, 6, 7, and 8.

Crazy Train ♩=128

2 3 4 5

Musical notation for 'Crazy Train' in bass clef, 4/4 time, featuring eighth and quarter notes with fingerings 2, 3, 4, and 5.

Star Wars ♩=108

3 2 3 3 4 3 5 3 3 6

Musical notation for 'Star Wars' in bass clef, 4/4 time, featuring eighth and quarter notes with fingerings 3, 2, 3, 3, 4, 3, 5, 3, 3, and 6.

Play that Funky Music ♩=112

2 3 4 5 6 7 8 9

Musical notation for 'Play that Funky Music' in bass clef, 4/4 time, featuring eighth and quarter notes with fingerings 2, 3, 4, 5, 6, 7, 8, and 9.

Happy Birthday ♩=88

2 3 4 5 6 7 8 9

Musical notation for the bass line of 'Happy Birthday' in 3/4 time, featuring a sequence of eighth notes and quarter notes. The piece is in B-flat major and has a tempo of 88 beats per minute. The notation includes measure numbers 2 through 9.

Stayin' Alive ♩=100

2 3 4

Musical notation for the bass line of 'Stayin' Alive' in 4/4 time, featuring a sequence of eighth notes and quarter notes. The piece is in B-flat major and has a tempo of 100 beats per minute. The notation includes measure numbers 2 through 4.

Axel Foley / Crazy Frog ♩=100

2 3 4 5 6 7 8

Musical notation for the bass line of 'Axel Foley / Crazy Frog' in 4/4 time, featuring a sequence of eighth notes and quarter notes. The piece is in B-flat major and has a tempo of 100 beats per minute. The notation includes measure numbers 2 through 8.

The Final Countdown ♩=108

2 3 4

5 6 7 8 9

Musical notation for the bass line of 'The Final Countdown' in 4/4 time, featuring a sequence of eighth notes and quarter notes. The piece is in B-flat major and has a tempo of 108 beats per minute. The notation includes measure numbers 2 through 9.

Harry Potter ♩=144

2 3 4 5 6 7 8 9

10 11 12 13 14 15 16

Musical notation for the bass line of 'Harry Potter' in 3/4 time, featuring a sequence of eighth notes and quarter notes. The piece is in B-flat major and has a tempo of 144 beats per minute. The notation includes measure numbers 2 through 16.