

B♭ Trumpet Fingering Chart

(Notes on gray background are pedal tones -- younger players should use 1 2 3 for all pedal tones.)

C	C# D♭	D	D# E♭	E	F
Open	1 2 3	1 3	2 3	1 2	1

F# G♭	G	G# A♭	A	A# B♭	B
1 2 3	1 3	2 3	1 2 or 3	1	2

C	C# D♭	D	D# E♭	E	F
Open	1 2 3	1 3	2 3	1 2 or 3	1

F# G♭	G	G# A♭	A	A# B♭	B
2 or 1 2 3	Open or 1 3	2 3	1 2 or 3	1 or 1 2 3	2 or 1 3

C	C# D♭	D	D# E♭	E	F
Open or 2 3	1 2 or 3	1 or 1 3	2 or 2 3	Open or 1 2	1

F# G♭	G	G# A♭	A	A# B♭	B
2	Open or 1 3	2 3	1 2 or 3	1	2

C	C# D♭	D	D# E♭	E	F
Open	2 or 1 2	Open or 1	2	Open	1

(When more than one fingering is shown, the first is the most common.)

Long Tones

Concert F Descending

1

2

Long Tone 1

1a

1b

1c

1d

Articulation Exercise

Trumpet in B \flat

Notes that Touch

Long-Lifted Notes
Played as long as they can w/o touching

7

Lifted Notes
Play as full length eighth note with an eighth rest

Notes that Touch

13

Lifted Notes

18

20

Daily Drill / Individual Warm-Up

- 1.) Playing these drills everyday will transform you into a brass playing ROCK STAR
- 2.) These drills should be played before you play ANYTHING else!
- 3.) After you complete your Daily Drill, you should then practice your Scales, and then your Sheet Music.

Section 1 - Lip Slurs

Level 1 - Play Smoothly and at a Moderate to Slow Tempo. Change Notes using Only Your Air Speed and Embouchure!

Musical notation for Level 1 Lip Slurs. The first staff contains measures 1 through 7. Measure 1 is marked with a '1' and a '(0)'. Measures 2-3 are marked with a '2' and '(23)'. Measures 4-5 are marked with a '3' and '(2)'. Measures 6-7 are marked with a '4' and '(1)'. The second staff contains measures 8 through 14. Measure 8 is marked with an '8'. Measures 9-10 are marked with a '9' and '(23)'. Measures 11-12 are marked with a '10' and '(13-slide)'. Measures 13-14 are marked with a '11' and '(123-slide)'.

Level 2 - Keep Everything Still and Your Air Steady & Smooth!

Musical notation for Level 2 Lip Slurs. The first staff contains measures 1 through 8. Measure 1 is marked with a '1' and a '(0)'. Measures 2-3 are marked with a '2' and '(2)'. Measures 4-5 are marked with a '3' and '(1)'. Measures 6-7 are marked with a '4' and '(12)'. The second staff contains measures 9 through 14. Measure 9 is marked with a '9'. Measures 10-11 are marked with a '10' and '(23)'. Measures 12-13 are marked with a '11' and '(13-slide)'. Measures 14 is marked with a '12' and '(123-slide)'.

Level 3 - Keep Your Air Moving Fast, Steady, and Smooth!

Musical notation for Level 3 Lip Slurs. The first staff contains measures 1 through 6. Measure 1 is marked with a '1' and a '(0)'. Measures 2-3 are marked with a '2' and '(2)'. Measures 4-5 are marked with a '3' and '(1)'. The second staff contains measures 7 through 14. Measure 7 is marked with a '7'. Measures 8-9 are marked with an '8' and '(12)'. Measures 10-11 are marked with a '9' and '(23)'. Measures 12-13 are marked with a '10' and '(13-slide)'. Measure 14 is marked with an '11' and '(123-slide)'.

Level 4 - FAST AIR!!! Be Sure to Take in a Huge Breath at every Breath Mark! Don't Articulate!!!

Musical notation for Level 4 Lip Slurs. The first staff contains measures 1 through 6. Measure 1 is marked with a '1' and a '(0)'. Measures 2-3 are marked with a '2' and '(2)'. Measures 4-5 are marked with a '3' and '(1)'. The second staff contains measures 7 through 12. Measure 7 is marked with a '7'. Measures 8-9 are marked with an '8' and '(12)'. Measures 10-11 are marked with a '9' and '(23)'. Measure 12 is marked with a '10' and '(13-slide)'.

TMEA Region IX Required Scales

Trumpet

(Euphonium TC)

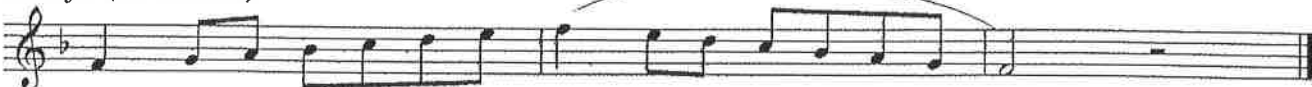
G Major (Concert F)



C Major (Concert Bb)



F Major (Eb Concert)



Bb Major (Ab Concert)



Eb Major (Db Concert)



Ab Major (Gb Concert)



Db Major (B Concert)



F# Major (E Concert)



B Major (A Concert)



E Major (D Concert)



A Major (G Concert)



D Major (C Concert)



Chromatic Exercises

Allison
Allison

Level 1 Chromatic Scale

Musical notation for Level 1 Chromatic Scale, consisting of two staves. The first staff starts at measure 1 and ends at measure 7. The second staff starts at measure 8 and ends at measure 14. The scale is written in 4/4 time, starting on middle C (C4) and ascending chromatically to G4, then descending chromatically to C3.

Level 2 Chromatic Scale

Musical notation for Level 2 Chromatic Scale, consisting of one staff starting at measure 15 and ending at measure 22. The scale is written in 4/4 time, starting on middle C (C4) and ascending chromatically to G4, then descending chromatically to C3.

Level 3 Chromatic Scale

Musical notation for Level 3 Chromatic Scale, consisting of two staves. The first staff starts at measure 23 and ends at measure 26. The second staff starts at measure 27 and ends at measure 30. The scale is written in 4/4 time, starting on middle C (C4) and ascending chromatically to G4, then descending chromatically to C3.

Level 4 Chromatic Scale

Musical notation for Level 4 Chromatic Scale, consisting of one staff starting at measure 31 and ending at measure 38. The scale is written in 4/4 time, starting on middle C (C4) and ascending chromatically to G4, then descending chromatically to C3. The exercise is divided into two phrases by a slur.

Level 5 Chromatic Scale

Musical notation for Level 5 Chromatic Scale, consisting of one staff starting at measure 35 and ending at measure 42. The scale is written in 4/4 time, starting on middle C (C4) and ascending chromatically to G4, then descending chromatically to C3. The exercise is divided into two phrases by a slur.

Level 6 Chromatic Scale

Musical notation for Level 6 Chromatic Scale, consisting of one staff starting at measure 39 and ending at measure 46. The scale is written in 4/4 time, starting on middle C (C4) and ascending chromatically to G4, then descending chromatically to C3. The exercise is divided into two phrases by a slur.

Trumpet

Jump! ♩=136

Musical notation for 'Jump!' in 4/4 time, tempo 136. The melody starts with a quarter rest, followed by quarter notes G4, A4, B4, and C5. The second measure contains eighth notes G4, A4, B4, C5, B4, A4, G4, and F4. The third measure contains eighth notes E4, D4, C4, B3, A3, G3, F3, and E3. The fourth measure contains quarter notes D3, C3, B2, and A2. Fingering numbers 2, 3, and 4 are placed above the first three measures respectively.

Smoke on the Water ♩=112

Musical notation for 'Smoke on the Water' in 4/4 time, tempo 112. The melody starts with a quarter rest, followed by quarter notes G4, A4, B4, and C5. The second measure contains eighth notes G4, A4, B4, C5, B4, A4, G4, and F4. The third measure contains eighth notes E4, D4, C4, B3, A3, G3, F3, and E3. The fourth measure contains quarter notes D3, C3, B2, and A2. Fingering numbers 2, 3, and 4 are placed above the first three measures respectively.

Shorties - Level 1

I Like to Move It ♩=116

Musical notation for 'I Like to Move It' in 4/4 time, tempo 116. The melody starts with a quarter rest, followed by quarter notes G4, A4, B4, and C5. The second measure contains eighth notes G4, A4, B4, C5, B4, A4, G4, and F4. The third measure contains eighth notes E4, D4, C4, B3, A3, G3, F3, and E3. The fourth measure contains quarter notes D3, C3, B2, and A2. Fingering numbers 2, 3, 4, and 5 are placed above the first four measures respectively.

7.Nation Army ♩=116

Musical notation for '7.Nation Army' in 4/4 time, tempo 116. The melody starts with a quarter rest, followed by quarter notes G4, A4, B4, and C5. The second measure contains eighth notes G4, A4, B4, C5, B4, A4, G4, and F4. The third measure contains eighth notes E4, D4, C4, B3, A3, G3, F3, and E3. The fourth measure contains quarter notes D3, C3, B2, and A2. Fingering numbers 3, 2, 3, 3, 4, and 3 are placed above the first six measures respectively. A dynamic marking *f* is placed below the first measure.

The Streets of Cairo (Snake Charmer) ♩=100

Musical notation for 'The Streets of Cairo (Snake Charmer)' in 4/4 time, tempo 100. The melody starts with a quarter rest, followed by quarter notes G4, A4, B4, and C5. The second measure contains eighth notes G4, A4, B4, C5, B4, A4, G4, and F4. The third measure contains eighth notes E4, D4, C4, B3, A3, G3, F3, and E3. The fourth measure contains quarter notes D3, C3, B2, and A2. Fingering numbers 2, 3, 4, and 5 are placed above the first four measures respectively.

NFL on Fox ♩=100

Musical notation for 'NFL on Fox' in 4/4 time, tempo 100. The melody starts with a quarter rest, followed by quarter notes G4, A4, B4, and C5. The second measure contains eighth notes G4, A4, B4, C5, B4, A4, G4, and F4. The third measure contains eighth notes E4, D4, C4, B3, A3, G3, F3, and E3. The fourth measure contains quarter notes D3, C3, B2, and A2. Fingering numbers 2, 3, 4, 5, 6, 7, and 8 are placed above the first seven measures respectively.

Crazy Train ♩=128

Musical notation for 'Crazy Train' in 4/4 time, tempo 128. The melody starts with a quarter rest, followed by quarter notes G4, A4, B4, and C5. The second measure contains eighth notes G4, A4, B4, C5, B4, A4, G4, and F4. The third measure contains eighth notes E4, D4, C4, B3, A3, G3, F3, and E3. The fourth measure contains quarter notes D3, C3, B2, and A2. Fingering numbers 2, 3, 4, and 5 are placed above the first four measures respectively.

Star Wars ♩=108

Musical notation for 'Star Wars' in 4/4 time, tempo 108. The melody starts with a quarter rest, followed by quarter notes G4, A4, B4, and C5. The second measure contains eighth notes G4, A4, B4, C5, B4, A4, G4, and F4. The third measure contains eighth notes E4, D4, C4, B3, A3, G3, F3, and E3. The fourth measure contains quarter notes D3, C3, B2, and A2. Fingering numbers 3, 2, 3, 3, 4, 3, 5, 3, 3, and 6 are placed above the first ten measures respectively.

Play that Funky Music ♩=112

Musical notation for 'Play that Funky Music' in 4/4 time, tempo 112. The melody starts with a quarter rest, followed by quarter notes G4, A4, B4, and C5. The second measure contains eighth notes G4, A4, B4, C5, B4, A4, G4, and F4. The third measure contains eighth notes E4, D4, C4, B3, A3, G3, F3, and E3. The fourth measure contains quarter notes D3, C3, B2, and A2. Fingering numbers 2, 3, 4, 5, 6, 7, 8, and 9 are placed above the first eight measures respectively.

Happy Birthday $\text{♩}=88$

Musical notation for 'Happy Birthday' in 3/4 time, tempo 88. The piece consists of 9 measures. Measure numbers 2 through 9 are indicated above the staff. The key signature has one flat (Bb).

Stayin' Alive $\text{♩}=100$

Musical notation for 'Stayin' Alive' in 4/4 time, tempo 100. The piece consists of 4 measures. Measure numbers 2, 3, and 4 are indicated above the staff. The key signature has one flat (Bb).

Axel Foley / Crazy Frog $\text{♩}=100$

Musical notation for 'Axel Foley / Crazy Frog' in 4/4 time, tempo 100. The piece consists of 8 measures. Measure numbers 2 through 8 are indicated above the staff. The key signature has one flat (Bb).

Shorties - Level 3

The Final Countdown $\text{♩}=108$

Musical notation for 'The Final Countdown' in 4/4 time, tempo 108. The piece consists of 9 measures. Measure numbers 2, 3, 4, 5, 6, 7, 8, and 9 are indicated above the staff. The key signature has one flat (Bb).

Harry Potter $\text{♩}=144$

Musical notation for 'Harry Potter' in 3/4 time, tempo 144. The piece consists of 16 measures. Measure numbers 2 through 16 are indicated above the staff. The key signature has one flat (Bb).