

# Trombone Position Chart

Notes on gray background are pedal tones.

F	F# Gb	G	G# Ab	A	A# Bb
6	5	4	3	2	1

B	C	C# Db	D	D# Eb	E	F
Tb7 (lip down)	T 7	T 6	Tb4	Tb3	7 or T 2	6 or T 1

F# Gb	G	G# Ab	A	A# Bb	B	C
5	4 or Tb6	3 or T 6	2 or Tb4	1 or Tb3	7 or Tb2	6 or T 1

C# Db	D	D# Eb	E	F	F# Gb	G
5	4	3	2 or 7	1 or 6	5	4

G# Ab	A	A# Bb	B	C	C# Db
3 or 7	2 or 6	1 or #5	4 or b7	3 or b6	2 or b5

D	D# Eb	E	F	F# Gb	G
1 or b4	3 or #6	2 or #5	1 or #4 or 6	#3 or 5 or 7	#2 or 4 or 6

G# Ab	A	A# Bb	B	C	D
3 or 5 or 7	2 or 4 or 6	1 or 3 or 5	2 or 4	3 or b1 or 6	1 or b4

(When more than one position is shown, the first is the most common.)

# Long Tones

## Concert F Descending

1

Exercise 1: Concert F Descending. This exercise consists of two staves of music in bass clef with a common time signature. The first staff contains measures 1 through 7, and the second staff contains measures 8 through 14. The notes are: 1 (F), 2 (E), 3 (D), 4 (C), 5 (B), 6 (A), 7 (G), 8 (F), 9 (E), 10 (D), 11 (C), 12 (B), 13 (A), 14 (G).

2

Exercise 2: Concert F Descending. This exercise consists of one staff of music in bass clef with a common time signature. It contains measures 1 through 4. The notes are: 1 (F), 2 (E), 3 (D), 4 (C).

## Long Tone 1

1a

Exercise 1a: Long Tone 1. This exercise consists of two staves of music in bass clef with a common time signature. The first staff contains measures 1 through 7, and the second staff contains measures 8 through 14. The notes are: 1 (F), 2 (E), 3 (D), 4 (C), 5 (B), 6 (A), 7 (G), 8 (F), 9 (E), 10 (D), 11 (C), 12 (B), 13 (A), 14 (G).

1b

Exercise 1b: Long Tone 1. This exercise consists of two staves of music in bass clef with a common time signature. The first staff contains measures 1 through 7, and the second staff contains measures 8 through 14. The notes are: 1 (F), 2 (E), 3 (D), 4 (C), 5 (B), 6 (A), 7 (G), 8 (F), 9 (E), 10 (D), 11 (C), 12 (B), 13 (A), 14 (G).

1c

Exercise 1c: Long Tone 1. This exercise consists of two staves of music in bass clef with a common time signature. The first staff contains measures 1 through 5, and the second staff contains measures 6 through 10. The notes are: 1 (F), 2 (E), 3 (D), 4 (C), 5 (B), 6 (A), 7 (G), 8 (F), 9 (E), 10 (D).

1d

Exercise 1d: Long Tone 1. This exercise consists of two staves of music in bass clef with a common time signature. The first staff contains measures 1 through 6, and the second staff contains measures 7 through 12. The notes are: 1 (F), 2 (E), 3 (D), 4 (C), 5 (B), 6 (A), 7 (G), 8 (F), 9 (E), 10 (D), 11 (C), 12 (B).

Trombone

# Articulation Exercise

Notes that Touch

Long-Lifted Notes  
Played as long as they can w/o touching



7

Lifted Notes  
Play as full length eighth note with an eighth rest

Notes that Touch



13

Lifted Notes



18



20



**Daily Drill / Individual Warm-Up**

- 1.) Playing these drills everyday will transform you into a brass playing ROCK STAR
- 2.) These drills should be played before you play ANYTHING else!
- 3.) After you complete your Daily Drill, you should then practice your Scales, and then your Sheet Music.

**Section 1 - Lip Slurs**

**Level 1 - Play Smoothly and at a Moderate to Slow Tempo. Change Notes using Only Your Air Speed and Embouchure!**

1

(1) (2) (3) (4)

8

(5) (T) (6) (T2) (7)

**Level 2 - Keep Everything Still and Your Air Steady & Smooth!**

1

(1) (2) (3) (4)

9

(5) (T) (6) (T2) (7)

**Level 3 - Keep Your Air Moving Fast, Steady, and Smooth!**

1

(1) (2) (3)

7

(4) (5) (T) (6) (T2) (7)

**Level 4 - FAST AIR!!! Be Sure to Take in a Huge Breath at every Breath Mark! Don't Articulate!!!**

1

(1) (2) (3)

7

(4) (5) (T) (6)

TMEA Region IX Required Scales

# Trombone / Euphonium

F Major



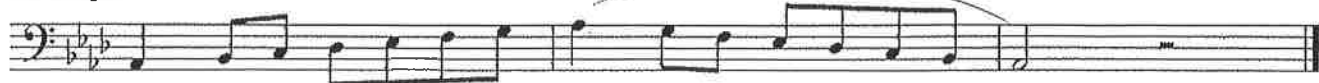
Bb Major



Eb Major



Ab Major



Db Major



Gb Major



B Major



E Major



A Major



D Major



G Major



C Major



# Euphonium

Chromatic  
Scale

Two staves of musical notation for the Euphonium Chromatic Scale. The first staff shows the ascending scale from C2 to C3, and the second staff shows the descending scale from C3 to C2. Both staves are marked with '3' and brackets to indicate triplet exercises. The first staff has three triplet markings on the ascending line and five on the descending line. The second staff has five triplet markings on the descending line.

# T-bone

Chromatic  
Scale

Two staves of musical notation for the T-bone Chromatic Scale. The first staff shows the ascending scale from C2 to C3, and the second staff shows the descending scale from C3 to C2. Both staves are marked with '3' and brackets to indicate triplet exercises. The first staff has three triplet markings on the ascending line and five on the descending line. The second staff has five triplet markings on the descending line.

# Chromatic Exercises

Allison  
Allison

## Level 1 Chromatic Scale

Musical notation for Level 1 Chromatic Scale, starting at measure 8. The scale is written in bass clef, 4/4 time, and B-flat major. It consists of two lines of music. The first line contains measures 8 through 14, and the second line contains measures 15 through 22. The scale is played in a descending direction.

## Level 2 Chromatic Scale

Musical notation for Level 2 Chromatic Scale, starting at measure 15. The scale is written in bass clef, 4/4 time, and B-flat major. It consists of one line of music containing measures 15 through 22. The scale is played in a descending direction.

## Level 3 Chromatic Scale

Musical notation for Level 3 Chromatic Scale, starting at measure 23. The scale is written in bass clef, 4/4 time, and B-flat major. It consists of two lines of music. The first line contains measures 23 through 26, and the second line contains measures 27 through 30. The scale is played in a descending direction.

## Level 4 Chromatic Scale

Musical notation for Level 4 Chromatic Scale, starting at measure 31. The scale is written in bass clef, 4/4 time, and B-flat major. It consists of one line of music containing measures 31 through 38. The scale is played in a descending direction.

## Level 5 Chromatic Scale

Musical notation for Level 5 Chromatic Scale, starting at measure 35. The scale is written in bass clef, 4/4 time, and B-flat major. It consists of one line of music containing measures 35 through 42. The scale is played in a descending direction.

## Level 6 Chromatic Scale

Musical notation for Level 6 Chromatic Scale, starting at measure 39. The scale is written in bass clef, 4/4 time, and B-flat major. It consists of one line of music containing measures 39 through 46. The scale is played in a descending direction.





# Bassoon / Trombone / Euph.

Jump! ♩=136

Musical notation for 'Jump!' in bass clef, 4/4 time, key of B-flat. The piece starts with a double bar line and repeat sign. The melody consists of eighth and quarter notes, ending with a repeat sign.

Smoke on the Water ♩=112

Shorties - Level 1

Musical notation for 'Smoke on the Water' in bass clef, 4/4 time, key of B-flat. The melody features a triplet of eighth notes and a quarter note, ending with a repeat sign.

I Like to Move It ♩=116

Musical notation for 'I Like to Move It' in bass clef, 4/4 time, key of B-flat. The melody includes eighth and quarter notes with fingerings 2, 3, 4, and 5, ending with a repeat sign.

7 Nation Army ♩=116

Musical notation for '7 Nation Army' in bass clef, 4/4 time, key of B-flat. The melody features eighth and quarter notes with fingerings 2, 3, 4, and 5, and a dynamic marking of *f*. It ends with a repeat sign.

The Streets of Cairo (Snake Charmer) ♩=100

Musical notation for 'The Streets of Cairo' in bass clef, 4/4 time, key of B-flat. The melody includes eighth and quarter notes with fingerings 2, 3, 4, and 5, ending with a repeat sign.

NFL on Fox ♩=100

Musical notation for 'NFL on Fox' in bass clef, 4/4 time, key of B-flat. The melody consists of eighth and quarter notes with fingerings 2, 3, 4, 5, 6, 7, and 8, ending with a repeat sign.

Crazy Train ♩=128

Musical notation for 'Crazy Train' in bass clef, 4/4 time, key of B-flat. The melody features eighth and quarter notes with fingerings 2, 3, 4, and 5, ending with a repeat sign.

Star Wars ♩=108

Musical notation for 'Star Wars' in bass clef, 4/4 time, key of B-flat. The melody includes eighth and quarter notes with fingerings 2, 3, 4, 5, and 6, ending with a repeat sign.

Play that Funky Music ♩=112

Musical notation for 'Play that Funky Music' in bass clef, 4/4 time, key of B-flat. The melody consists of eighth and quarter notes with fingerings 2, 3, 4, 5, 6, 7, 8, and 9, ending with a repeat sign.

Happy Birthday ♩=88

Sheet music for 'Happy Birthday' in bass clef, 3/4 time signature, key of B-flat major. The melody consists of nine measures, with measure numbers 2 through 9 indicated above the notes.

Stayin' Alive ♩=100

Sheet music for 'Stayin' Alive' in bass clef, 4/4 time signature, key of B-flat major. The melody features eighth-note patterns and rests, with measure numbers 2, 3, and 4 indicated above the notes.

Axel Foley / Crazy Frog ♩=100

Sheet music for 'Axel Foley / Crazy Frog' in bass clef, 4/4 time signature, key of B-flat major. The melody includes eighth-note patterns and rests, with measure numbers 2 through 8 indicated above the notes.

The Final Countdown ♩=108

Sheet music for 'The Final Countdown' in bass clef, 4/4 time signature, key of B-flat major. The melody features eighth-note patterns and rests, with measure numbers 2, 3, 4, 5, 6, 7, 8, and 9 indicated above the notes.

Harry Potter ♩=144

Sheet music for 'Harry Potter' in bass clef, 3/4 time signature, key of B-flat major. The melody consists of sixteen measures, with measure numbers 2 through 16 indicated above the notes.