

B \flat Tenor Saxophone Fingering Chart

A \sharp	B \flat	B	C	C \sharp	D \flat	D	D \sharp	E \flat	E
------------	-----------	---	---	------------	-----------	---	------------	-----------	---

F	F \sharp	G \flat	G	G \sharp	A \flat	A	A \sharp	B \flat
---	------------	-----------	---	------------	-----------	---	------------	-----------

B	C	C \sharp	D \flat	D	D \sharp	E \flat	E	F
---	---	------------	-----------	---	------------	-----------	---	---

F \sharp	G \flat	G	G \sharp	A \flat	A	A \sharp	B \flat	B
------------	-----------	---	------------	-----------	---	------------	-----------	---

C	C \sharp	D \flat	D	D \sharp	E \flat	E	F
---	------------	-----------	---	------------	-----------	---	---

(Notes on gray background are suggested altissimo fingerings.)

F \sharp	G \flat	G	G \sharp	A \flat	A	A \sharp	B \flat	B	C
------------	-----------	---	------------	-----------	---	------------	-----------	---	---

(When more than one fingering is shown, the first is the most common.)

Long Tones

Concert F Descending

1

Musical notation for exercise 1, measures 1-14. The first staff contains measures 1-7, and the second staff contains measures 8-14. The key signature has one sharp (F#) and the time signature is common time (C). The notes are: 1 (F#), 2 (G), 3 (A), 4 (B), 5 (C), 6 (B), 7 (A), 8 (G), 9 (F#), 10 (E), 11 (D), 12 (C), 13 (B), 14 (A).

2

Musical notation for exercise 2, measures 1-4. The key signature has one sharp (F#) and the time signature is common time (C). The notes are: 1 (F#), 2 (G), 3 (A), 4 (B).

Long Tone 1

1a

Musical notation for exercise 1a, measures 1-14. The first staff contains measures 1-7, and the second staff contains measures 8-14. The key signature has one sharp (F#) and the time signature is common time (C). The notes are: 1 (F#), 2 (G), 3 (A), 4 (B), 5 (C), 6 (B), 7 (A), 8 (G), 9 (F#), 10 (E), 11 (D), 12 (C), 13 (B), 14 (A).

1b

Musical notation for exercise 1b, measures 1-14. The first staff contains measures 1-7, and the second staff contains measures 8-14. The key signature has one sharp (F#) and the time signature is common time (C). The notes are: 1 (F#), 2 (G), 3 (A), 4 (B), 5 (C), 6 (B), 7 (A), 8 (G), 9 (F#), 10 (E), 11 (D), 12 (C), 13 (B), 14 (A).

1c

Musical notation for exercise 1c, measures 1-10. The first staff contains measures 1-5, and the second staff contains measures 6-10. The key signature has one sharp (F#) and the time signature is common time (C). The notes are: 1 (F#), 2 (G), 3 (A), 4 (B), 5 (C), 6 (B), 7 (A), 8 (G), 9 (F#), 10 (E).

1d

Musical notation for exercise 1d, measures 1-12. The first staff contains measures 1-6, and the second staff contains measures 7-12. The key signature has one sharp (F#) and the time signature is common time (C). The notes are: 1 (F#), 2 (G), 3 (A), 4 (B), 5 (C), 6 (B), 7 (A), 8 (G), 9 (F#), 10 (E), 11 (D), 12 (C).

INDIVIDUAL STUDY - Tenor Saxophone

187. BREATH CONTROL STUDY *Try both two and four measure phrases.*

CD Track 54

188. A \flat CONCERT ETUDE

CD Track 57

189. ARTICULATION ETUDE

CD Track 58

190. ARPEGGIO STUDY

CD Track 59

191. TECHNIQUE CHALLENGE

CD Track 60

INDIVIDUAL STUDY - Tenor Saxophone

192. EXPRESSIVE PLAYING STUDY

CD Track 61

Musical notation for exercise 192, featuring a single staff in 3/4 time with a key signature of one sharp (F#). The piece begins with a mezzo-forte (*mf*) dynamic. The melody consists of eighth and quarter notes, with some notes beamed together and slurs indicating phrasing.

193. TONGUING EXERCISE

CD Track 62

Musical notation for exercise 193, consisting of two staves in 2/4 time with a key signature of two sharps (F# and C#). The first staff starts with a mezzo-forte (*mf*) dynamic. The second staff begins with a piano (*p*) dynamic, followed by a crescendo (*cresc.*) leading to a forte (*f*) dynamic. The exercise focuses on eighth-note patterns with accents and slurs.

194. LEGATO TECHNIQUE EXERCISE

CD Track 63

Musical notation for exercise 194, consisting of two staves in 2/4 time with a key signature of two sharps (F# and C#). The exercise is a legato technique exercise featuring continuous eighth-note runs with slurs and accents.

195. CHROMATIC CHALLENGE #1

CD Track 64

Musical notation for exercise 195, consisting of three staves in 3/4 time with a key signature of one sharp (F#). The exercise is a chromatic challenge featuring eighth-note runs with slurs and accents. The first two staves have a delta (Δ) followed by the word "Alt." indicating an alternate fingering.

196. CHROMATIC CHALLENGE #2

CD Track 65

Musical notation for exercise 196, consisting of two staves in 4/4 time with a key signature of two flats (Bb and Eb). The exercise is a chromatic challenge featuring eighth-note runs with slurs and accents. The first staff has a delta (Δ) followed by "Alt." and the second staff has six delta (Δ) symbols followed by "Alt." indicating alternate fingerings.

197. TRIPLET ETUDE

CD Track 66

Musical notation for exercise 197, consisting of two staves in 4/4 time with a key signature of one sharp (F#). The exercise is a triplet etude featuring eighth-note triplets throughout. The first staff has seven triplet markings (3) and the second staff has eight triplet markings (3). The final triplet in the second staff is followed by a delta (Δ) and "Alt." indicating an alternate fingering.

Tenor Saxophone

Articulation Exercise

Notes that Touch

Long-Lifted Notes
Played as long as they can w/o touching

7

Lifted Notes
Play as full length eighth note with an eighth rest

Notes that Touch

13

Lifted Notes

18

20

TMEA Region IX Required Scales

Tenor Saxophone

G Major (Concert F)



C Major (Concert Bb)



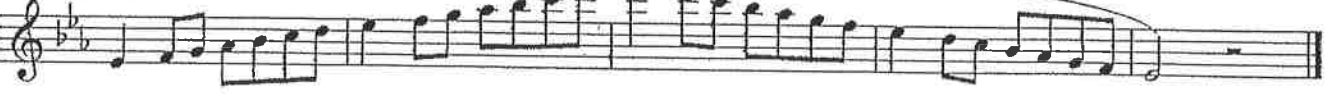
F Major (Eb Concert)



Bb Major (Ab Concert)



Eb Major (Db Concert)



Ab Major (Gb Concert)



Db Major (B Concert)



F# Major (E Concert)



B Major (A Concert)



E Major (D Concert)



A Major (G Concert)



D Major (C Concert)



Chromatic
Scale

The image shows two staves of musical notation for a chromatic scale. The first staff begins with a treble clef and a common time signature (C). The scale starts on middle C (C4) and ascends chromatically through the notes: C, C#, D, D#, E, E#, F, F#, G, G#, A, A#, B, B#, C5. The first four notes of the ascending scale are grouped into triplets, each marked with a bracket and the number '3'. The second staff continues the scale from B# down to C4, with the notes: B#, B, A#, A, G#, G, F#, F, E#, E, D#, D, C#. The last four notes of the descending scale are grouped into triplets, each marked with a bracket and the number '3'. The piece concludes with a double bar line.

Happy Birthday ♩=88

Musical notation for the first part of 'Happy Birthday'. It features a treble clef, a key signature of one flat (Bb), and a 3/4 time signature. The melody consists of quarter and eighth notes. Fingering numbers 2 through 9 are placed above the notes.

Stayin' Alive ♩=100

Musical notation for the first part of 'Stayin' Alive'. It features a treble clef, a key signature of one flat (Bb), and a 4/4 time signature. The melody includes eighth-note patterns and quarter notes. Fingering numbers 2, 3, and 4 are placed above the notes.

Axel Foley / Crazy Frog ♩=100

Musical notation for the first part of 'Axel Foley / Crazy Frog'. It features a treble clef, a key signature of one flat (Bb), and a 4/4 time signature. The melody consists of quarter and eighth notes with some rests. Fingering numbers 2 through 8 are placed above the notes.

The Final Countdown ♩=108

snorties - Level 3

Musical notation for the first part of 'The Final Countdown'. It features a treble clef, a key signature of one flat (Bb), and a 4/4 time signature. The melody consists of eighth-note patterns and quarter notes. Fingering numbers 2, 3, 4, 5, 6, 7, 8, and 9 are placed above the notes.

Harry Potter ♩=144

Musical notation for the first part of 'Harry Potter'. It features a treble clef, a key signature of one flat (Bb), and a 3/4 time signature. The melody consists of quarter and eighth notes. Fingering numbers 2 through 16 are placed above the notes.