

# Bassoon Fingering Chart

The chart displays fingering for the following notes:

- Row 1: A<sub>4</sub>, B<sub>4</sub>, B, C, C<sub>♯</sub>, D<sub>♭</sub>, D, D<sub>♯</sub>, E<sub>♭</sub>, E, (lowers pitch), F
- Row 2: F<sub>♯</sub>, G<sub>♭</sub>, G, G<sub>♯</sub>, A<sub>♭</sub>, A, A<sub>♯</sub>, B<sub>♭</sub>, B, C, C<sub>♯</sub>, D<sub>♭</sub>
- Row 3: D, D<sub>♯</sub>, E<sub>♭</sub>, E, F, F<sub>♯</sub>, G<sub>♭</sub>, G, G<sub>♯</sub>, A<sub>♭</sub>
- Row 4: A, A<sub>♯</sub>, B<sub>♭</sub>, B, C, C<sub>♯</sub>, D<sub>♭</sub>, D, (lowers pitch)
- Row 5: D<sub>♯</sub>, E<sub>♭</sub>, E, F, F<sub>♯</sub>, G<sub>♭</sub>, G, G<sub>♯</sub>, A<sub>♭</sub>, (opt. whisper key), (opt. whisper key)
- Row 6: A, A<sub>♯</sub>, B<sub>♭</sub>, B, C, C<sub>♯</sub>, D<sub>♭</sub>, D, (lowers pitch), (raises pitch)

## Long Tones

### Concert F Descending

1

1 2 3 4 5 6 7 8 9 10 11 12 13 14

2

1 2 3 4

### Long Tone 1

1a

1 2 3 4 5 6 7 8 9 10 11 12 13 14

1b

1 2 3 4 5 6 7 8 9 10 11 12 13 14

1c

1 2 3 4 5 6 7 8 9 10

1d

1 2 3 4 5 6 7 8 9 10 11 12

# Warm-up #1

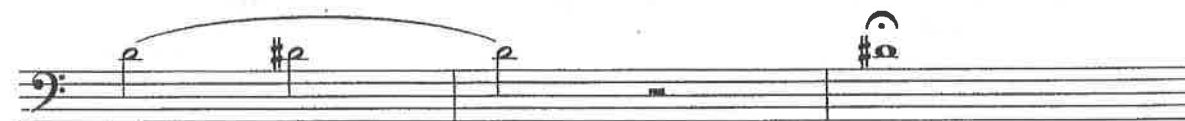
Bassoons

Musical score for Bassoons, Warm-up #1, measures 1-54. The score is written in bass clef with a key signature of one sharp (F#). The piece consists of 54 measures, divided into 11 systems of five measures each. The notation includes various note values (quarter, eighth, and sixteenth notes), rests, and slurs. Measure 29 features a fermata. The score concludes with a double bar line at the end of measure 54.

Forbes, 10/98

# Warm-Up #2

Bassoons



# Warm-up #3

Bassoons

1 2 3 4 5 6

7 8 9 10 11 12

13 14 15 16 17 18

19 20 21 22 23 24

25 26 27 28 29 30 31

32 33 34 35 36 37

38 39 40 41 42 43

44 45 46 47 48 49

50 51 52 53 54

# Warm-Up #4

Bassoons

## A. Octave Slurs

1 2 3  $\frac{1}{2}$  4 5 6

7 8 9 *flick* 10 11 12

13 14 *change 1st to upper flick key* 15 16 *lip slur* 17 18 *top flick* 19

Section A consists of three staves of music in bass clef, 4/4 time. The first staff contains measures 1 through 6. The second staff contains measures 7 through 12. The third staff contains measures 13 through 19. Handwritten annotations include a '1/2' above measure 3, 'flick' above measure 9, 'change 1st to upper flick key' above measures 15 and 16, 'lip slur' above measure 17, and 'top flick' above measure 19.

## B. More Half-Steps

20 21 22 23

24 25 26 27

28 29 30 31

32 33 34 35 36 37

Section B consists of four staves of music in bass clef, 4/4 time. The first staff contains measures 20 through 23. The second staff contains measures 24 through 27. The third staff contains measures 28 through 31. The fourth staff contains measures 32 through 37. Each measure contains a single note with a slur over it, and the notes move in half-step intervals.

# Warm Up #3

Bassoons

## 1. Chromatic Challenge

Musical notation for '1. Chromatic Challenge' in bass clef, 4/4 time. The piece consists of 30 measures of music. The notes are as follows:

Measure	Note
1	B <sub>1</sub> (with #)
2	A <sub>1</sub>
3	G <sub>1</sub>
4	F <sub>1</sub> (with #)
5	E <sub>1</sub>
6	D <sub>1</sub>
7	C <sub>1</sub>
8	B <sub>1</sub> (with #)
9	A <sub>1</sub>
10	G <sub>1</sub>
11	F <sub>1</sub> (with #)
12	E <sub>1</sub>
13	D <sub>1</sub>
14	C <sub>1</sub>
15	B <sub>1</sub> (with #)
16	A <sub>1</sub>
17	G <sub>1</sub>
18	F <sub>1</sub> (with #)
19	E <sub>1</sub>
20	D <sub>1</sub>
21	C <sub>1</sub>
22	B <sub>1</sub> (with #)
23	A <sub>1</sub>
24	G <sub>1</sub>
25	F <sub>1</sub> (with #)
26	E <sub>1</sub>
27	D <sub>1</sub>
28	C <sub>1</sub>
29	B <sub>1</sub> (with #)
30	A <sub>1</sub>

## 2. More fun stuff

Musical notation for '2. More fun stuff' in bass clef. The piece consists of 5 measures of music. The notes are as follows:

Measure	Note
31	A <sub>1</sub>
32	G <sub>1</sub>
33	F <sub>1</sub> (with #)
34	E <sub>1</sub>
35	D <sub>1</sub>

## 3. Extra Practice

Musical notation for '3. Extra Practice' in bass clef. The piece consists of 5 measures of music. The notes are as follows:

Measure	Note
36	C <sub>1</sub>
37	B <sub>1</sub> (with #)
38	A <sub>1</sub>
39	G <sub>1</sub>
40	F <sub>1</sub> (with #)







# INDIVIDUAL STUDY - Bassoon

## 187. LOW NOTE EXCURSION - New Note

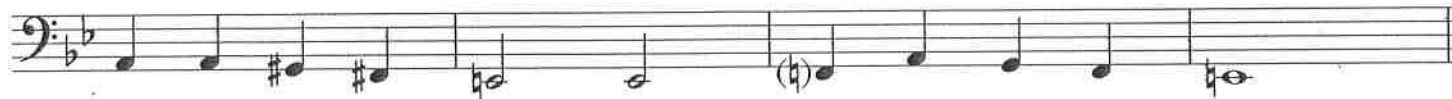
CD Track 56

**F** 

## 188. LOW ENHARMONIC STUDY - New Note

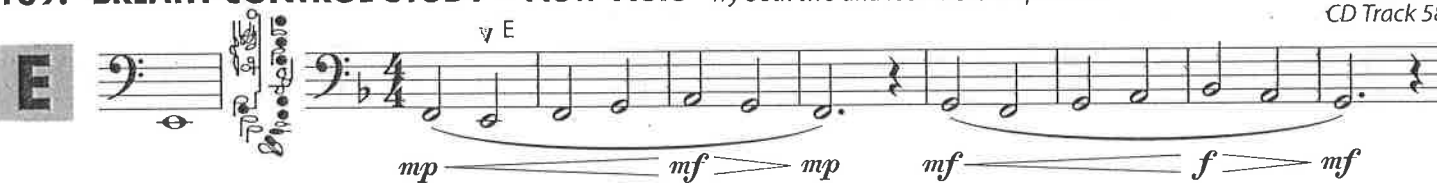
CD Track 57

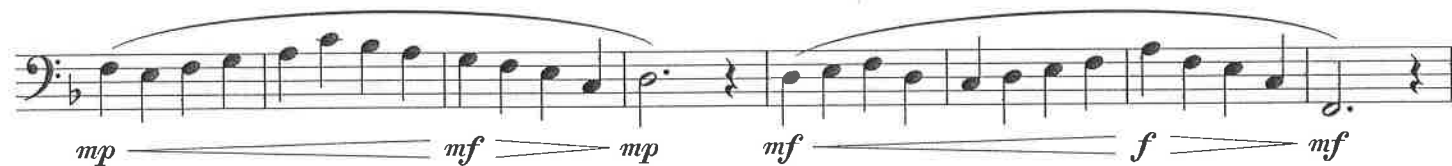
**F#/Gb** 



## 189. BREATH CONTROL STUDY - New Note Try both two and four measure phrases.

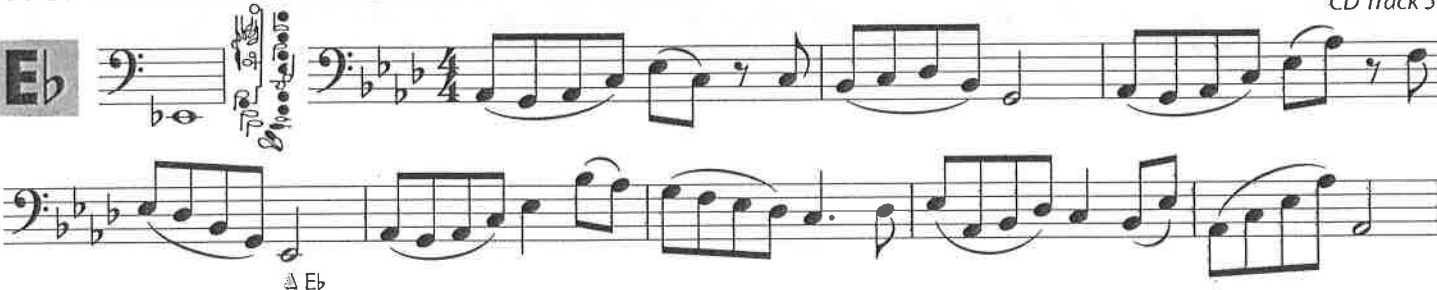
CD Track 58

**E** 



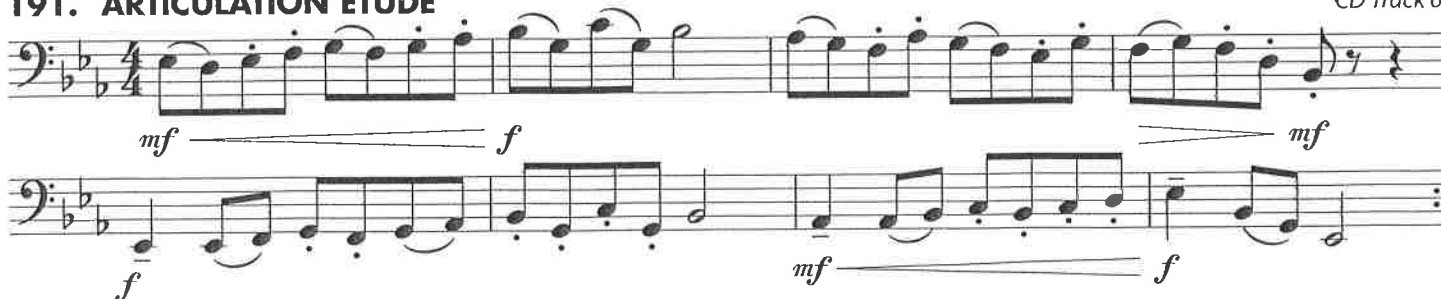
## 190. ARPEGGIO EXERCISE IN A<sup>b</sup> - New Note

CD Track 59

**E<sup>b</sup>** 

## 191. ARTICULATION ETUDE

CD Track 60



## 192. ARPEGGIO CHALLENGE

CD Track 61



TMEA Region IX Required Scales

# Bassoon

F Major



Bb Major



Eb Major



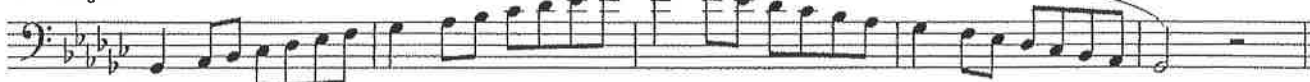
Ab Major



Db Major



Gb Major



B Major



E Major



A Major



D Major



G Major



C Major



Chromatic  
Scale

The image shows a musical score for a chromatic scale in bass clef, consisting of two staves. The first staff begins with a treble clef and a common time signature (C). The second staff begins with a bass clef. The music is written in a chromatic scale, moving through all twelve notes of the chromatic scale. The first staff contains a series of eighth notes, with several groups of three notes marked with a bracket and the number '3', indicating triplets. A large slur covers the entire first staff. The second staff continues the chromatic scale, also featuring several groups of three notes marked with a bracket and the number '3'. The piece concludes with a double bar line.

# Chromatic Exercises

## Level 1 Chromatic Scale

Musical notation for Level 1 Chromatic Scale, starting at measure 8. The scale is written in bass clef, 4/4 time, and consists of two lines of music. The first line contains measures 8 through 14, and the second line contains measures 15 through 22. The scale is in B-flat major, starting on B-flat and ending on B-flat.

## Level 2 Chromatic Scale

Musical notation for Level 2 Chromatic Scale, starting at measure 15. The scale is written in bass clef, 4/4 time, and consists of one line of music. The scale is in B-flat major, starting on B-flat and ending on B-flat.

## Level 3 Chromatic Scale

Musical notation for Level 3 Chromatic Scale, starting at measure 23. The scale is written in bass clef, 4/4 time, and consists of two lines of music. The first line contains measures 23 through 26, and the second line contains measures 27 through 30. The scale is in B-flat major, starting on B-flat and ending on B-flat.

## Level 4 Chromatic Scale

Musical notation for Level 4 Chromatic Scale, starting at measure 31. The scale is written in bass clef, 4/4 time, and consists of one line of music. The scale is in B-flat major, starting on B-flat and ending on B-flat.

## Level 5 Chromatic Scale

Musical notation for Level 5 Chromatic Scale, starting at measure 35. The scale is written in bass clef, 4/4 time, and consists of one line of music. The scale is in B-flat major, starting on B-flat and ending on B-flat.

## Level 6 Chromatic Scale

Musical notation for Level 6 Chromatic Scale, starting at measure 39. The scale is written in bass clef, 4/4 time, and consists of one line of music. The scale is in B-flat major, starting on B-flat and ending on B-flat.



Jump! ♩=136

# Bassoon / Trombone / Euph.

Musical notation for 'Jump!' in bass clef, 4/4 time, key of B-flat major. The piece starts with a double bar line and repeat sign. The melody consists of eighth and quarter notes. Fingerings 2, 3, and 4 are indicated above the notes.

Smoke on the Water ♩=112

Shorties - Level 1

Musical notation for 'Smoke on the Water' in bass clef, 4/4 time, key of B-flat major. The piece starts with a double bar line and repeat sign. The melody features eighth and quarter notes. Fingerings 2, 3, and 4 are indicated above the notes.

I Like to Move It ♩=116

Musical notation for 'I Like to Move It' in bass clef, 4/4 time, key of B-flat major. The piece starts with a double bar line and repeat sign. The melody consists of eighth and quarter notes. Fingerings 2, 3, 4, and 5 are indicated above the notes.

7 Nation Army ♩=116

Musical notation for '7 Nation Army' in bass clef, 4/4 time, key of B-flat major. The piece starts with a double bar line and repeat sign. The melody consists of quarter and eighth notes. Fingerings 2, 3, and 4 are indicated above the notes. A dynamic marking of *f* is present below the first few notes.

The Streets of Cairo (Snake Charmer) ♩=100

Musical notation for 'The Streets of Cairo (Snake Charmer)' in bass clef, 4/4 time, key of B-flat major. The piece starts with a double bar line and repeat sign. The melody consists of quarter and eighth notes. Fingerings 2, 3, 4, and 5 are indicated above the notes.

NFL on Fox ♩=100

Musical notation for 'NFL on Fox' in bass clef, 4/4 time, key of B-flat major. The piece starts with a double bar line and repeat sign. The melody consists of quarter and eighth notes. Fingerings 2, 3, 4, 5, 6, 7, and 8 are indicated above the notes.

Crazy Train ♩=128

Musical notation for 'Crazy Train' in bass clef, 4/4 time, key of B-flat major. The piece starts with a double bar line and repeat sign. The melody consists of eighth and quarter notes. Fingerings 2, 3, 4, and 5 are indicated above the notes.

Star Wars ♩=108

Musical notation for 'Star Wars' in bass clef, 4/4 time, key of B-flat major. The piece starts with a double bar line and repeat sign. The melody consists of quarter and eighth notes. Fingerings 2, 3, 4, 5, and 6 are indicated above the notes.

Play that Funky Music ♩=112

Musical notation for 'Play that Funky Music' in bass clef, 4/4 time, key of B-flat major. The piece starts with a double bar line and repeat sign. The melody consists of quarter and eighth notes. Fingerings 2, 3, 4, 5, 6, 7, 8, and 9 are indicated above the notes.

Happy Birthday ♩=88

Musical notation for the first piece, 'Happy Birthday'. It is written in bass clef with a key signature of two flats (B-flat and E-flat) and a 3/4 time signature. The melody consists of quarter and eighth notes. Measure numbers 2 through 9 are indicated above the staff.

Stayin' Alive ♩=100

Musical notation for the second piece, 'Stayin' Alive'. It is written in bass clef with a key signature of two flats and a 4/4 time signature. The melody features a prominent eighth-note triplet pattern. Measure numbers 2, 3, and 4 are indicated above the staff.

Axel Foley / Crazy Frog ♩=100

Musical notation for the third piece, 'Axel Foley / Crazy Frog'. It is written in bass clef with a key signature of two flats and a 4/4 time signature. The melody is characterized by a repeating eighth-note triplet pattern. Measure numbers 2 through 8 are indicated above the staff.

The Final Countdown ♩=108

Musical notation for the fourth piece, 'The Final Countdown'. It is written in bass clef with a key signature of two flats and a 4/4 time signature. The melody consists of eighth-note triplet patterns. Measure numbers 2, 3, 4, 5, 6, 7, 8, and 9 are indicated above the staff.

Harry Potter ♩=144

Musical notation for the fifth piece, 'Harry Potter'. It is written in bass clef with a key signature of two flats and a 3/4 time signature. The melody is a simple sequence of quarter notes. Measure numbers 2 through 16 are indicated above the staff.