

E♭ Alto Saxophone Fingering Chart

| | | | | | | | | | |
|----|----|---|---|----|----|---|----|----|---|
| A♯ | B♭ | B | C | C♯ | D♭ | D | D♯ | E♭ | E |
| | | | | | | | | | |

| | | | | | | | | | |
|---|----|----|---|----|----|---|-------|--|--|
| F | F♯ | G♭ | G | G♯ | A♭ | A | A♯ B♭ | | |
| | | | | | | | | | |

| | | | | | | | | |
|---|---|----|----|---|----|----|---|---|
| B | C | C♯ | D♭ | D | D♯ | E♭ | E | F |
| | | | | | | | | |

| | | | | | | | | |
|----|----|---|----|----|---|----|----|---|
| F♯ | G♭ | G | G♯ | A♭ | A | A♯ | B♭ | B |
| | | | | | | | | |

| | | | | | | | |
|---|----|----|---|----|----|---|---|
| C | C♯ | D♭ | D | D♯ | E♭ | E | F |
| | | | | | | | |

(Notes on gray background are suggested altissimo fingerings.)

| | | | | | | | | | |
|----|----|---|----|----|---|----|----|---|---|
| F♯ | G♭ | G | G♯ | A♭ | A | A♯ | B♭ | B | C |
| | | | | | | | | | |

Long Tones

Concert F Descending

1

2

Detailed description: This section contains two musical exercises. Exercise 1 consists of two staves of music in treble clef with a common time signature. The first staff contains measures 1 through 7, and the second staff contains measures 8 through 14. The notes are: 1 (F), 2 (E), 3 (D), 4 (C), 5 (B), 6 (A), 7 (G), 8 (F), 9 (E), 10 (D), 11 (C), 12 (B), 13 (A), 14 (G). Exercise 2 consists of one staff of music in treble clef with a common time signature, containing measures 1 through 4. The notes are: 1 (F), 2 (E), 3 (D), 4 (C).

Long Tone 1

1a

1b

1c

1d

Detailed description: This section contains four musical exercises. Exercise 1a consists of two staves of music in treble clef with a common time signature. The first staff contains measures 1 through 7, and the second staff contains measures 8 through 14. The notes are: 1 (F), 2 (E), 3 (D), 4 (C), 5 (B), 6 (A), 7 (G), 8 (F), 9 (E), 10 (D), 11 (C), 12 (B), 13 (A), 14 (G). Exercise 1b consists of two staves of music in treble clef with a common time signature. The first staff contains measures 1 through 7, and the second staff contains measures 8 through 14. The notes are: 1 (F), 2 (E), 3 (D), 4 (C), 5 (B), 6 (A), 7 (G), 8 (F), 9 (E), 10 (D), 11 (C), 12 (B), 13 (A), 14 (G). Exercise 1c consists of two staves of music in treble clef with a common time signature. The first staff contains measures 1 through 5, and the second staff contains measures 6 through 10. The notes are: 1 (F), 2 (E), 3 (D), 4 (C), 5 (B), 6 (A), 7 (G), 8 (F), 9 (E), 10 (D). Exercise 1d consists of two staves of music in treble clef with a common time signature. The first staff contains measures 1 through 6, and the second staff contains measures 7 through 12. The notes are: 1 (F), 2 (E), 3 (D), 4 (C), 5 (B), 6 (A), 7 (G), 8 (F), 9 (E), 10 (D), 11 (C), 12 (B).

SAXOPHONE

Octave Slurs

The image displays six staves of handwritten musical notation for saxophone, illustrating various octave slur exercises. The notation is written in treble clef with a 4/4 time signature. Each staff is numbered on the left side.

- Staff 1:** Features two slurs. The first slur covers a half note G4 and a half note A4. The second slur covers a half note B4 and a half note C5.
- Staff 2:** Features three slurs. The first slur covers a half note G4 and a half note A4. The second slur covers a half note B4 and a half note C5. The third slur covers a half note D5 and a half note E5.
- Staff 3:** Features four slurs. The first slur covers a half note G4 and a half note A4. The second slur covers a half note B4 and a half note C5. The third slur covers a half note D5 and a half note E5. The fourth slur covers a half note F5 and a half note G5.
- Staff 4:** Features three slurs. The first slur covers a half note G4 and a half note A4. The second slur covers a half note B4 and a half note C5. The third slur covers a half note D5 and a half note E5.
- Staff 5:** Features a single slur covering a half note G4 and a half note A4.

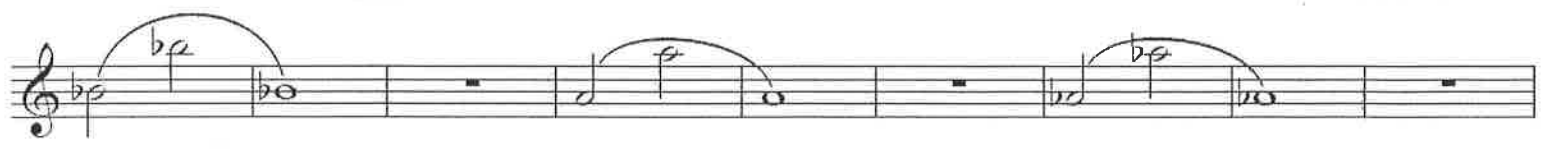
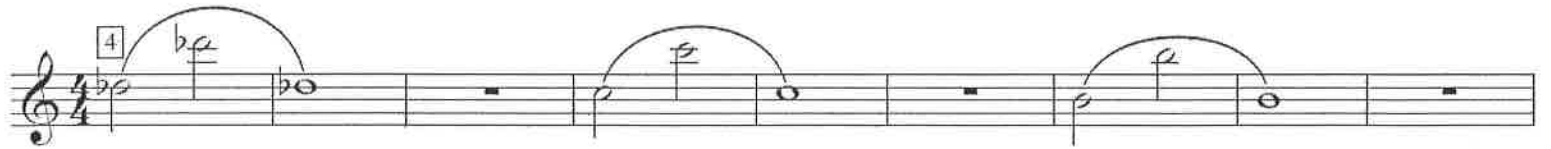
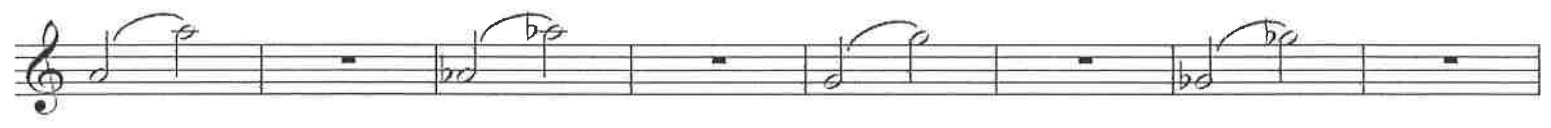
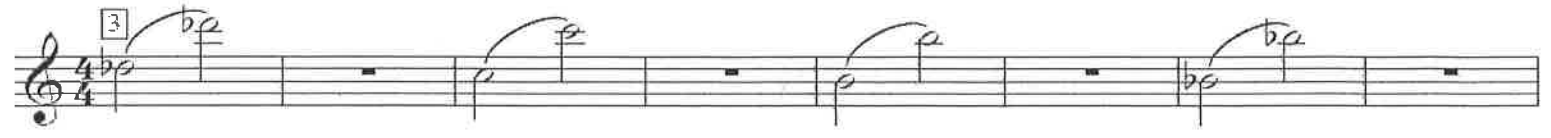
SAXOPHONE OCTAVE SLURS

1

Exercise 1, measures 1-4. The first staff shows a sequence of eighth notes with slurs: G4, A4, B4, C5, D5, E5, F5, G5. The second staff continues with slurs: A5, B5, C6, D6, E6, F6, G6, A6. The third staff continues with slurs: B6, C7, D7, E7, F7, G7, A7, B7. The fourth staff concludes with slurs: C8, D8, E8, F8, G8, A8, B8, C9.

2

Exercise 2, measures 1-4. The first staff shows a sequence of quarter notes with slurs: G4, A4, B4, C5, D5, E5, F5, G5. The second staff continues with slurs: A5, B5, C6, D6, E6, F6, G6, A6. The third staff continues with slurs: B6, C7, D7, E7, F7, G7, A7, B7. The fourth staff concludes with slurs: C8, D8, E8, F8, G8, A8, B8, C9.





EXCELLERATORS-FOR ALTO SAXOPHONES ONLY

71

Test mon: 1/30

95

► *Use the alternate F# fingering.

100

102

► *Use the alternate F# fingering.

108

EXCELLERATORS-FOR ALTO SAXOPHONES ONLY

120

Musical notation for exercise 120, consisting of two staves of music in 4/4 time with a treble clef. The melody is composed of eighth and quarter notes with various slurs and accents.

134

Musical notation for exercise 134, consisting of two staves of music in 4/4 time with a treble clef and a key signature of one sharp (F#). The melody features eighth and quarter notes with slurs and accents.

143

Musical notation for exercise 143, consisting of two staves of music in 4/4 time with a treble clef and a key signature of one sharp (F#). The melody includes eighth notes, quarter notes, and half notes with slurs and accents.

148

Musical notation for exercise 148, consisting of two staves of music in 4/4 time with a treble clef and a key signature of two flats (Bb, Eb). The melody consists of eighth and quarter notes with slurs and accents.

154

Musical notation for exercise 154, consisting of one staff of music in 2/4 time with a treble clef and a key signature of two sharps (F#, C#). The melody is composed of eighth and quarter notes with slurs and accents.

SAXOPHONE PALM KEY EXERCISES

1 2

3 4

5 6 7

8 9 10

11 12 13 14

15 16

17 18

19 20 21

22 23 24

25 26 27 28

16 Klosé Exercises

This page contains 16 numbered musical exercises for Alto Saxophone, arranged in a single system. Each exercise is written on a five-line staff with a treble clef and a common time signature (C). The exercises are as follows:

- 1.** A single melodic line starting on middle C, moving up stepwise to G4, then down stepwise to C4, with a repeat sign at the end.
- 2.** A melodic line starting on middle C, moving up stepwise to G4, then down stepwise to C4, with a repeat sign at the end.
- 3.** A melodic line starting on middle C, moving up stepwise to G4, then down stepwise to C4, with a repeat sign at the end.
- 4.** A melodic line starting on middle C, moving up stepwise to G4, then down stepwise to C4, with a repeat sign at the end.
- 5.** A melodic line starting on middle C, moving up stepwise to G4, then down stepwise to C4, with a repeat sign at the end.
- 6.** A melodic line starting on middle C, moving up stepwise to G4, then down stepwise to C4, with a repeat sign at the end.
- 7.** A melodic line starting on middle C, moving up stepwise to G4, then down stepwise to C4, with a repeat sign at the end.
- 8.** A melodic line starting on middle C, moving up stepwise to G4, then down stepwise to C4, with a repeat sign at the end.
- 9.** A melodic line starting on middle C, moving up stepwise to G4, then down stepwise to C4, with a repeat sign at the end.
- 10.** A melodic line starting on middle C, moving up stepwise to G4, then down stepwise to C4, with a repeat sign at the end.
- 11.** A melodic line starting on middle C, moving up stepwise to G4, then down stepwise to C4, with a repeat sign at the end.
- 12.** A melodic line starting on middle C, moving up stepwise to G4, then down stepwise to C4, with a repeat sign at the end.
- 13.** A melodic line starting on middle C, moving up stepwise to G4, then down stepwise to C4, with a repeat sign at the end.
- 14.** A melodic line starting on middle C, moving up stepwise to G4, then down stepwise to C4, with a repeat sign at the end.
- 15.** A melodic line starting on middle C, moving up stepwise to G4, then down stepwise to C4, with a repeat sign at the end.
- 16.** A melodic line starting on middle C, moving up stepwise to G4, then down stepwise to C4, with a repeat sign at the end.

INDIVIDUAL STUDY - Alto Saxophone

187. BREATH CONTROL STUDY *Try both two and four measure phrases.*

CD Track 5

188. A \flat CONCERT ETUDE

CD Track 57

189. ARTICULATION ETUDE

CD Track 58

190. ARPEGGIO STUDY

CD Track 59

191. TECHNIQUE CHALLENGE

CD Track 60

INDIVIDUAL STUDY - Alto Saxophone

192. EXPRESSIVE PLAYING STUDY

CD Track 61

mf

193. TONGUING EXERCISE

CD Track 62

mf

p *cresc.* *f*

194. LEGATO TECHNIQUE EXERCISE

CD Track 63

195. CHROMATIC CHALLENGE #1 - New Note

CD Track 64

C

Δ *Alt.*

Δ *Alt.*

Δ *C*

196. CHROMATIC CHALLENGE #2

CD Track 65

Δ *Alt.* Δ *Alt.* Δ *Alt.* Δ *Alt.* Δ *Alt.* Δ *Alt.*

197. TRIPLET ETUDE

CD Track 66

Δ *Alt.*

TMEA Region IX Required Scales

Alto / Baritone Saxophone

D Major (Concert F)

Musical notation for the D Major scale (Concert F) in treble clef, 2/4 time. The scale is written as a single line of music with a key signature of two sharps (F# and C#) and a common time signature. The notes are: D4, E4, F#4, G4, A4, B4, C#5, D5, C#5, B4, A4, G4, F#4, E4, D4.

G Major (Concert Bb)

Musical notation for the G Major scale (Concert Bb) in treble clef, 2/4 time. The scale is written as a single line of music with a key signature of one sharp (F#) and a common time signature. The notes are: G4, A4, B4, C5, B4, A4, G4, F#4, E4, D4, C4, B3, A3, G3, F#3, E3, D3, C3.

C Major (Eb Concert)

Musical notation for the C Major scale (Eb Concert) in treble clef, 2/4 time. The scale is written as a single line of music with a common time signature. The notes are: C4, D4, E4, F4, G4, A4, B4, C5, B4, A4, G4, F4, E4, D4, C4.

F Major (Ab Concert)

Musical notation for the F Major scale (Ab Concert) in treble clef, 2/4 time. The scale is written as a single line of music with a key signature of one flat (Bb) and a common time signature. The notes are: F4, G4, A4, Bb4, C5, Bb4, A4, G4, F#4, E4, D4, C4, Bb3, Ab3, G3, F#3, E3, D3, C3.

Bb Major (Db Concert)

Musical notation for the Bb Major scale (Db Concert) in treble clef, 2/4 time. The scale is written as a single line of music with a key signature of two flats (Bb and Eb) and a common time signature. The notes are: Bb4, C5, Bb4, Ab4, G4, F#4, E4, D4, C4, Bb3, Ab3, G3, F#3, E3, D3, C3.

Eb Major (Gb Concert)

Musical notation for the Eb Major scale (Gb Concert) in treble clef, 2/4 time. The scale is written as a single line of music with a key signature of three flats (Bb, Eb, and Ab) and a common time signature. The notes are: Eb4, F5, Eb4, D5, C5, Bb4, Ab4, G4, F#4, E4, D4, C4, Bb3, Ab3, G3, F#3, E3, D3, C3.

Ab Major (B Concert)

Musical notation for the Ab Major scale (B Concert) in treble clef, 2/4 time. The scale is written as a single line of music with a key signature of three flats (Bb, Eb, and Ab) and a common time signature. The notes are: Ab4, B5, Ab4, G5, F#4, E4, D4, C4, Bb3, Ab3, G3, F#3, E3, D3, C3.

Db Major (E Concert)

Musical notation for the Db Major scale (E Concert) in treble clef, 2/4 time. The scale is written as a single line of music with a key signature of four flats (Bb, Eb, Ab, and Db) and a common time signature. The notes are: Db4, E5, Db4, C5, Bb4, Ab4, G4, F#4, E4, D4, C4, Bb3, Ab3, G3, F#3, E3, D3, C3.

F# Major (A Concert)

Musical notation for the F# Major scale (A Concert) in treble clef, 2/4 time. The scale is written as a single line of music with a key signature of three sharps (F#, C#, and G#) and a common time signature. The notes are: F#4, G#4, A4, B4, C#5, B4, A4, G#4, F#4, E4, D4, C#4, B4, A4, G#4, F#4.

B Major (D Concert)

Musical notation for the B Major scale (D Concert) in treble clef, 2/4 time. The scale is written as a single line of music with a key signature of two sharps (F# and C#) and a common time signature. The notes are: B4, C#5, B4, A4, G#4, F#4, E4, D4, C#4, B4, A4, G#4, F#4, E4, D4, C#4, B4.

E Major (G Concert)

Musical notation for the E Major scale (G Concert) in treble clef, 2/4 time. The scale is written as a single line of music with a key signature of three sharps (F#, C#, and G#) and a common time signature. The notes are: E4, F#4, G#4, A4, B4, C#5, B4, A4, G#4, F#4, E4, D4, C#4, B4, A4, G#4, F#4, E4.

A Major (C Concert)

Musical notation for the A Major scale (C Concert) in treble clef, 2/4 time. The scale is written as a single line of music with a key signature of three sharps (F#, C#, and G#) and a common time signature. The notes are: A4, B4, C#5, B4, A4, G#4, F#4, E4, D4, C#4, B4, A4, G#4, F#4, E4, D4, C#4, A4.

Chromatic
Scale

The image displays two staves of musical notation for a chromatic scale exercise. The first staff begins with a treble clef and a common time signature (C). The scale starts on middle C (C4) and ascends chromatically through the notes: C, C#, D, D#, E, E#, F, F#, G, G#, A, A#, B, B#, and C5. The notes are grouped into eighth notes, with the first four groups (C-C#, D-D#, E-E#, F-F#) each marked with a triplet bracket and the number '3'. The second staff continues the scale from B# down to C4, with notes: B#, B, A, A#, G, G#, F, F#, E, E#, D, D#, C, and B. The first four groups (B#-B, A-A#, G-G#, F-F#) are also marked with triplet brackets and the number '3'. The piece concludes with a double bar line.

Chromatic Exercises

Level 1 Chromatic Scale

Musical notation for Level 1 Chromatic Scale, consisting of two staves. The first staff starts at measure 1 and ends at measure 7. The second staff starts at measure 8 and ends at measure 14. The scale is written in treble clef with a key signature of one sharp (F#) and a 4/4 time signature. It consists of an ascending scale from G4 to G5 and a descending scale from G5 to G4.

Level 2 Chromatic Scale

Musical notation for Level 2 Chromatic Scale, consisting of one staff starting at measure 15 and ending at measure 30. The scale is written in treble clef with a key signature of one sharp (F#) and a 4/4 time signature. It consists of an ascending scale from G4 to G5 and a descending scale from G5 to G4.

Level 3 Chromatic Scale

Musical notation for Level 3 Chromatic Scale, consisting of two staves. The first staff starts at measure 23 and ends at measure 26. The second staff starts at measure 27 and ends at measure 30. The scale is written in treble clef with a key signature of one sharp (F#) and a 4/4 time signature. It consists of an ascending scale from G4 to G5 and a descending scale from G5 to G4.

Level 4 Chromatic Scale

Musical notation for Level 4 Chromatic Scale, consisting of one staff starting at measure 31 and ending at measure 36. The scale is written in treble clef with a key signature of one sharp (F#) and a 4/4 time signature. It consists of an ascending scale from G4 to G5 and a descending scale from G5 to G4.

Level 5 Chromatic Scale

Musical notation for Level 5 Chromatic Scale, consisting of one staff starting at measure 35 and ending at measure 38. The scale is written in treble clef with a key signature of one sharp (F#) and a 4/4 time signature. It consists of an ascending scale from G4 to G5 and a descending scale from G5 to G4.

Level 6 Chromatic Scale

Musical notation for Level 6 Chromatic Scale, consisting of one staff starting at measure 39 and ending at measure 42. The scale is written in treble clef with a key signature of one sharp (F#) and a 4/4 time signature. It consists of an ascending scale from G4 to G5 and a descending scale from G5 to G4.

HTO Sax

Jump! ♩=136

Musical notation for 'Jump!' in 4/4 time, key of G major. The melody starts with a quarter rest, followed by quarter notes G4, A4, B4, C5, B4, A4, G4, F4, E4, D4, C4. Fingerings 2, 3, and 4 are indicated above the notes.

Smoke on the Water ♩=112

Musical notation for 'Smoke on the Water' in 4/4 time, key of G major. The melody starts with a quarter rest, followed by quarter notes G4, A4, B4, C5, B4, A4, G4, F4, E4, D4, C4. Fingerings 2, 3, and 4 are indicated above the notes.

I Like to Move It ♩=116

Musical notation for 'I Like to Move It' in 4/4 time, key of G major. The melody consists of eighth notes: G4, A4, B4, C5, B4, A4, G4, F4, E4, D4, C4. Fingerings 2, 3, 4, and 5 are indicated above the notes.

7 Nation Army ♩=116

Musical notation for '7 Nation Army' in 4/4 time, key of G major. The melody starts with a quarter rest, followed by quarter notes G4, A4, B4, C5, B4, A4, G4, F4, E4, D4, C4. Fingerings 2, 3, 4, and 3 are indicated above the notes. A dynamic marking *f* is present below the first measure.

The Streets of Cairo (Snake Charmer) ♩=100

Musical notation for 'The Streets of Cairo (Snake Charmer)' in 4/4 time, key of G major. The melody starts with a quarter rest, followed by quarter notes G4, A4, B4, C5, B4, A4, G4, F4, E4, D4, C4. Fingerings 2, 3, 4, and 5 are indicated above the notes.

NFL on Fox ♩=100

Musical notation for 'NFL on Fox' in 4/4 time, key of G major. The melody starts with a quarter rest, followed by quarter notes G4, A4, B4, C5, B4, A4, G4, F4, E4, D4, C4. Fingerings 2, 3, 4, 5, 6, 7, and 8 are indicated above the notes.

Crazy Train ♩=128

Musical notation for 'Crazy Train' in 4/4 time, key of G major. The melody consists of eighth notes: G4, A4, B4, C5, B4, A4, G4, F4, E4, D4, C4. Fingerings 2, 3, 4, and 5 are indicated above the notes.

Star Wars ♩=108

Musical notation for 'Star Wars' in 4/4 time, key of G major. The melody starts with a quarter rest, followed by quarter notes G4, A4, B4, C5, B4, A4, G4, F4, E4, D4, C4. Fingerings 2, 3, 4, 5, and 6 are indicated above the notes.

Play that Funky Music ♩=112

Musical notation for 'Play that Funky Music' in 4/4 time, key of G major. The melody starts with a quarter rest, followed by quarter notes G4, A4, B4, C5, B4, A4, G4, F4, E4, D4, C4. Fingerings 2, 3, and 4 are indicated above the notes.

Musical notation for 'Play that Funky Music' in 4/4 time, key of G major. The melody starts with a quarter rest, followed by quarter notes G4, A4, B4, C5, B4, A4, G4, F4, E4, D4, C4. Fingerings 5, 6, 7, 8, and 9 are indicated above the notes.

Happy Birthday ♩=88

Musical notation for 'Happy Birthday' in 3/4 time, key of G major. The melody starts with a quarter rest, followed by quarter notes G4, A4, B4, C5, B4, A4, G4, F4, E4, D4, C4. Fingerings 2, 3, 4, 5, 6, 7, 8, and 9 are indicated above the notes.

Stayin' Alive ♩=100

Musical notation for 'Stayin' Alive' in 4/4 time, key of G major. The melody starts with a quarter rest, followed by quarter notes G4, A4, B4, C5, B4, A4, G4, F4, E4, D4, C4. Fingerings 2, 3, and 4 are indicated above the notes.

Hito Sax

Axel Foley / Crazy Frog $\text{♩} = 100$

Musical notation for Axel Foley / Crazy Frog, 4/4 time signature. The melody consists of eighth and quarter notes. Fingerings 2 through 8 are indicated above the notes.

The Final Countdown $\text{♩} = 108$

Musical notation for The Final Countdown, 4/4 time signature. The melody features eighth and quarter notes with some beamed eighth notes. Fingerings 2 through 9 are indicated above the notes.

Harry Potter $\text{♩} = 144$

Musical notation for Harry Potter, 3/4 time signature. The melody consists of quarter and eighth notes. Fingerings 2 through 16 are indicated above the notes. The key signature changes from one flat to two flats and then to one sharp.